



Jasmin on Echo

SPECIAL SERVICE AREA

What is a Special Service Area?

The Municipality's Act States:

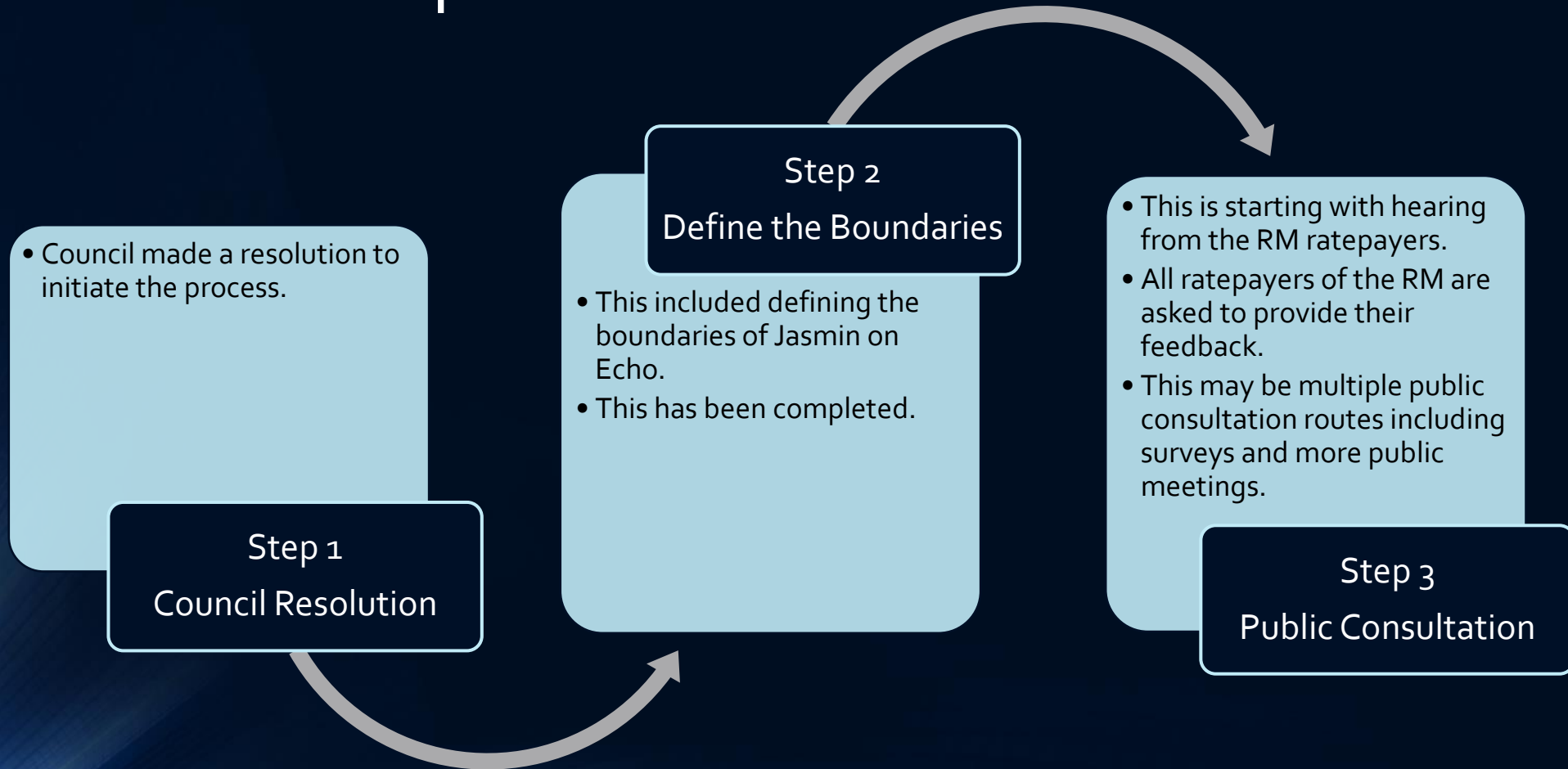
49.2 At the request of a municipality, the minister may, by order, establish areas within a rural municipality for the purposes of assigning different tax rates and providing different service levels.

What does that mean?

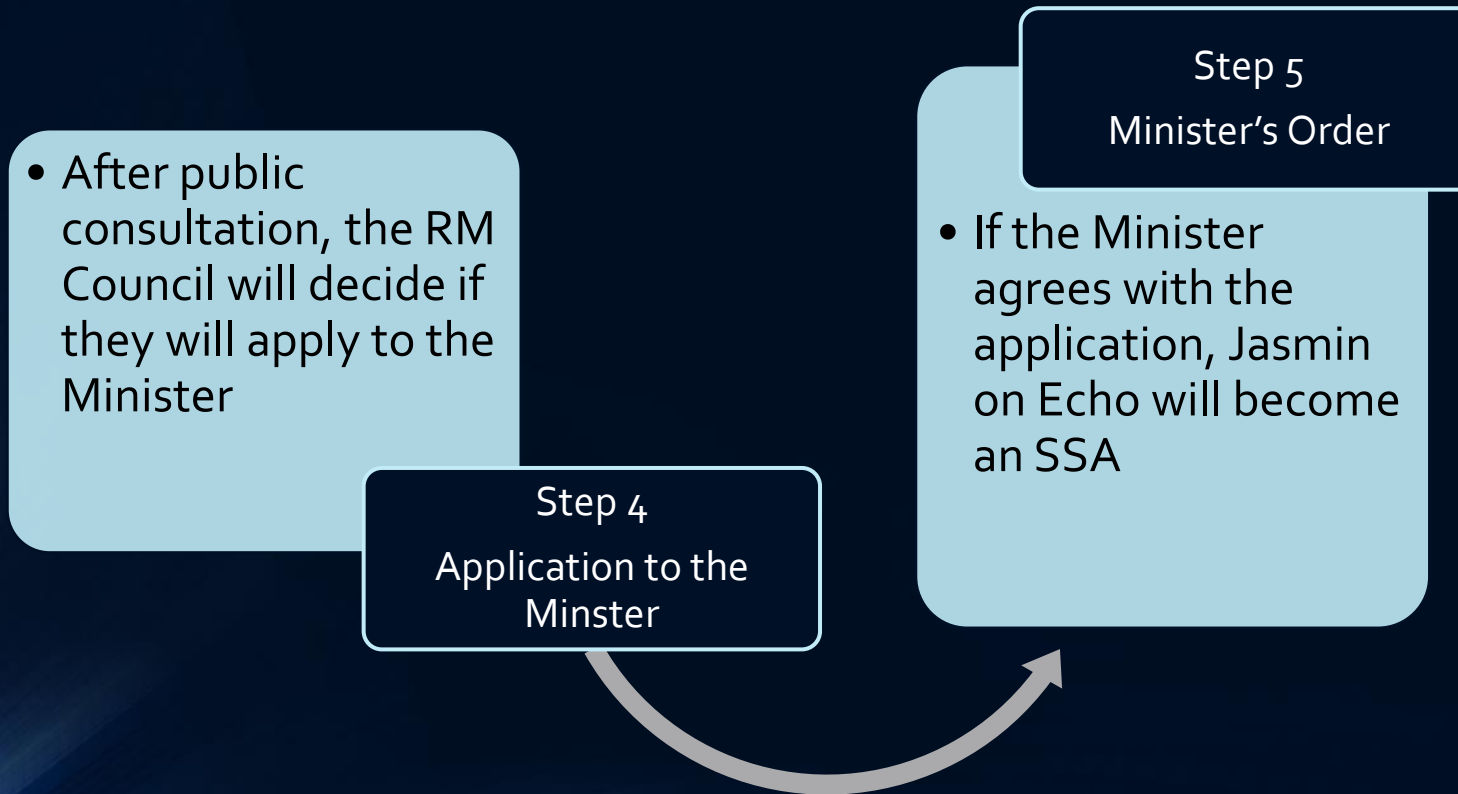
That Jasmin on Echo would be deemed to need a level of service that is different than the rest of the Municipality, therefore providing the ability to have a different tax rate to support that level of service.



What is the process to become an SSA?



What is the process to become an SSA?

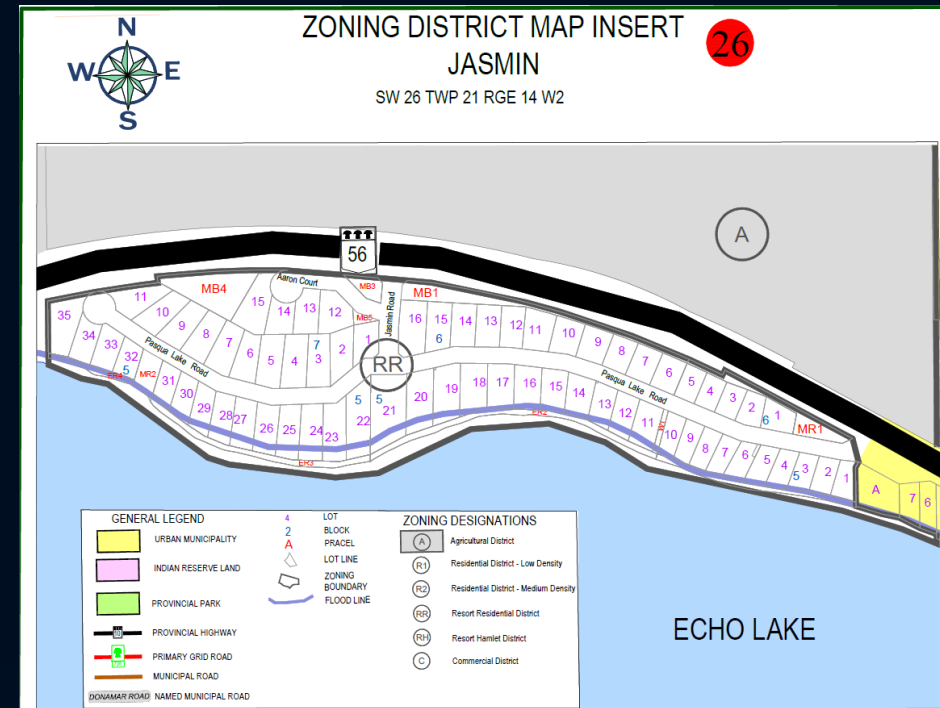


What does this mean for RM ratepayers?

- If Jasmin on Echo was to become an SSA they would no longer contribute to the general revenue of the RM.
- Jasmin on Echo as an SSA would function in a similar manner as an organized hamlet within the RM and would only pay for services delivered within the SSA.
- A cash financial analysis has been prepared and distributed to illustrate the Jasmin on Echo financial model using the current RM taxation policies. The SSA will have to budget for all their normal expenses plus other capital or other improvements.
- RM ratepayers outside of Jasmin on Echo would not pay for services within the boundaries of the SSA.

What does this mean for RM ratepayers?

- Jasmin on Echo may have a different tax rate than the rest of the RM
- Jasmin on Echo may have a different service level than the rest of the RM
- Jasmin on Echo becoming an SSA may change the costs of RM services for the remaining ratepayers outside of the SSA.



What does an SSA mean for Jasmin on Echo?

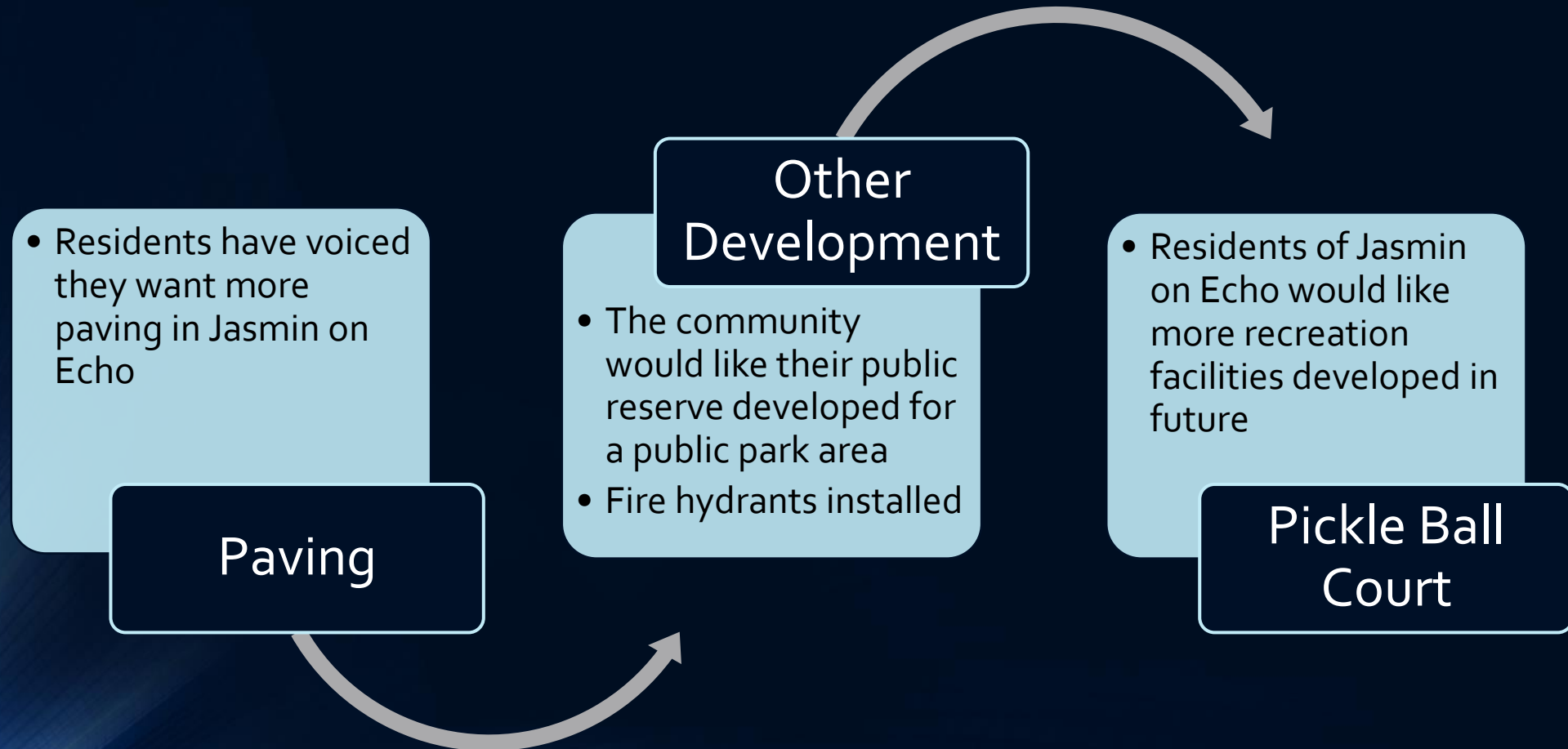
- A separate budget
- Their own reserve fund
- Separate accounting
- Capital investments would be paid for from their revenues and reserves
- Their level of service will be directly related to the revenues they receive through taxation and grants.



What does an SSA mean for Jasmin on Echo?

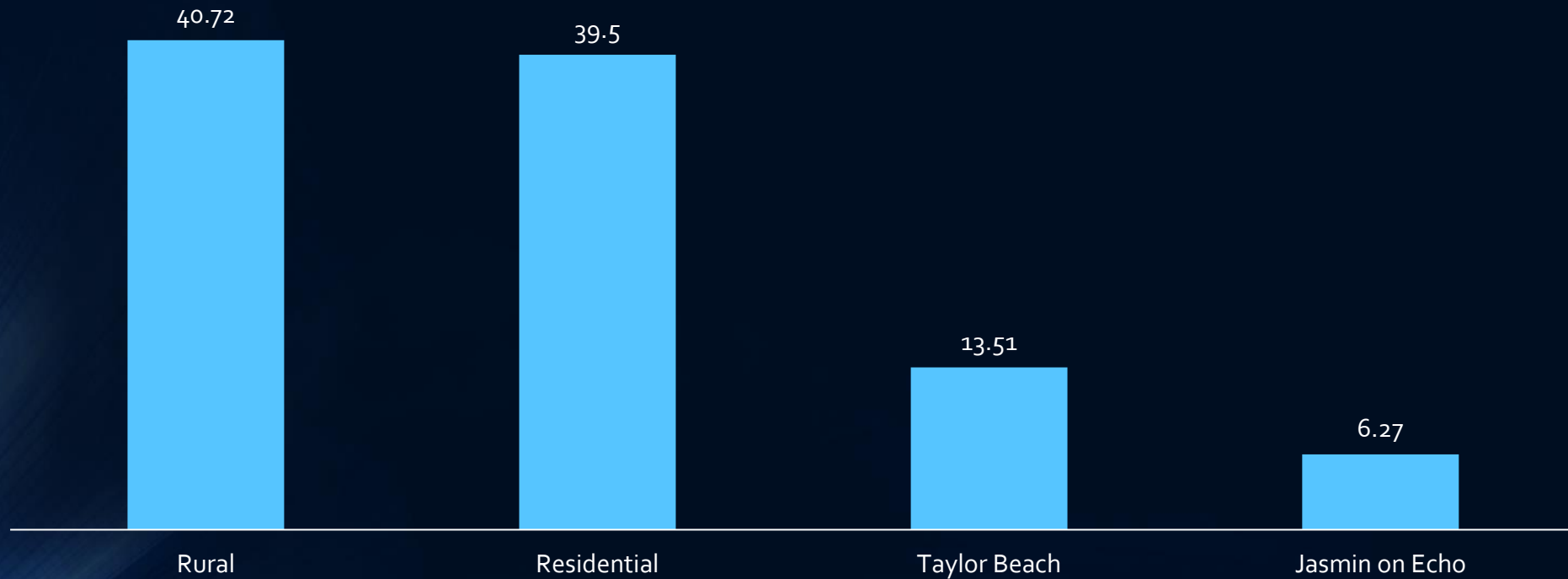
- Jasmin on Echo SSA may have a committee. RM Council strongly encourages the community to advise their division Councillor of community wants and needs.
- RM Council strongly encourages the community to hold an annual general meeting (AGM).
- Decisions for the SSA would be made by the RM Council.

Examples of Jasmin on Echo Wants



What percentage of assessment does Jasmin on Echo represent in the RM?

RM Assessment - \$255,494,524



Jasmin on Echo Financial Analysis

BASE REVENUES

\$90,464.26

That consists of \$86,464.26 from taxes and \$4,000.00 from Municipal Revenue Sharing

BASE EXPENSES

\$50,070.00

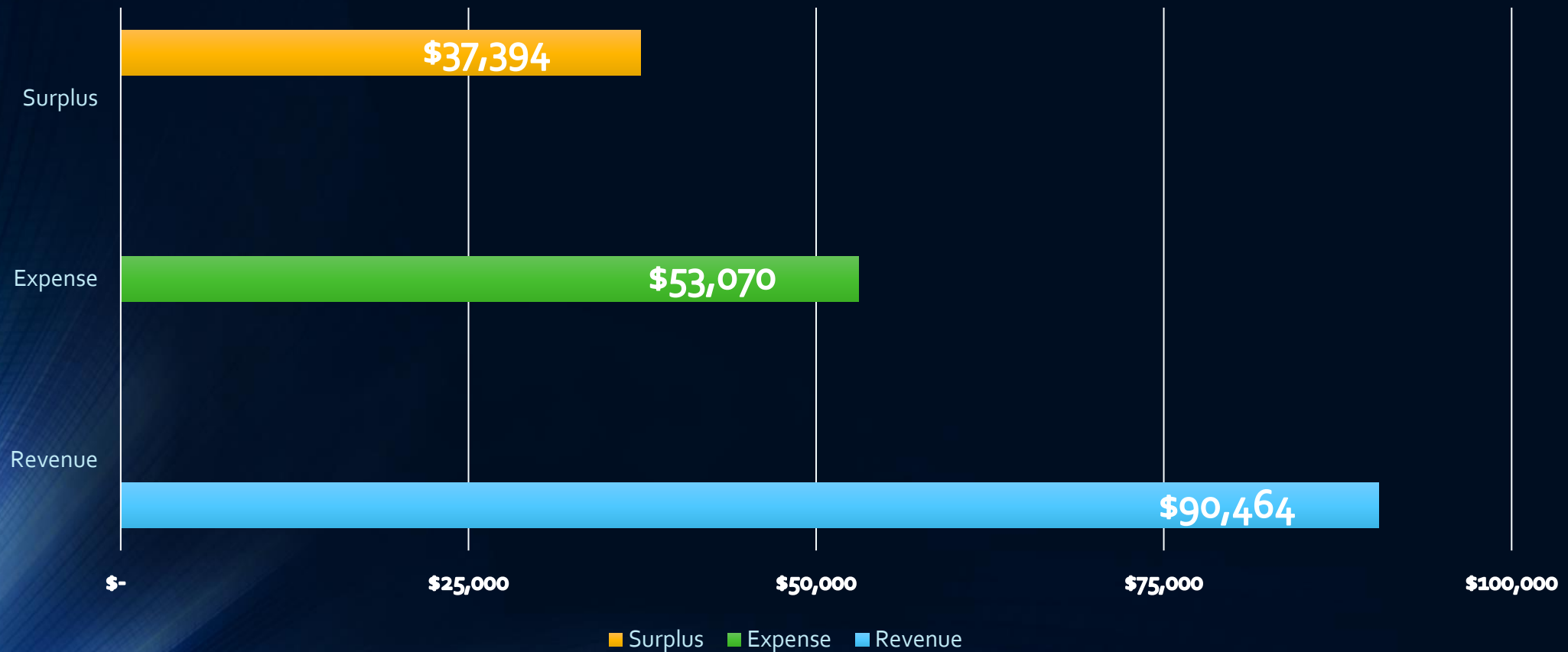
That consists of General Government, Police, Transportation, Environmental, Planning and Development, Recreation and Culture

**Does not include capital projects, community development, and amortization*

While a cash financial analysis has been prepared, the Municipality, including Jasmin on Echo, is required to operate in an accrual accounting system.

Jasmin on Echo SSA

Revenue, Expense, Surplus



Jasmin on Echo – Estimated Base Expenses

- **General Government \$22,400**
 - Governance, Administration, Audit, Assessment, Bylaw Enforcement
- **Protective Services \$4,340**
 - Police and Fire
- **Transportation Services \$10,100**
 - Custom Work, Wages, Streetlights
- **Planning & Development and Rec & Culture \$940**
 - Library, Rexenter, CLDPC
- **Environmental \$15,290**
 - Garbage collection, Landfill, Lagoon, Pest & Weed Control

What has the RM contributed to Jasmin in the past five years?

- 2021 – Paving \$62,438.00
- 2023 – Engineered Drainage Design \$10,474.00
- 2024 – Drainage improvements \$1,500.00

These are in addition to regular services and maintenance.

We want to hear from you



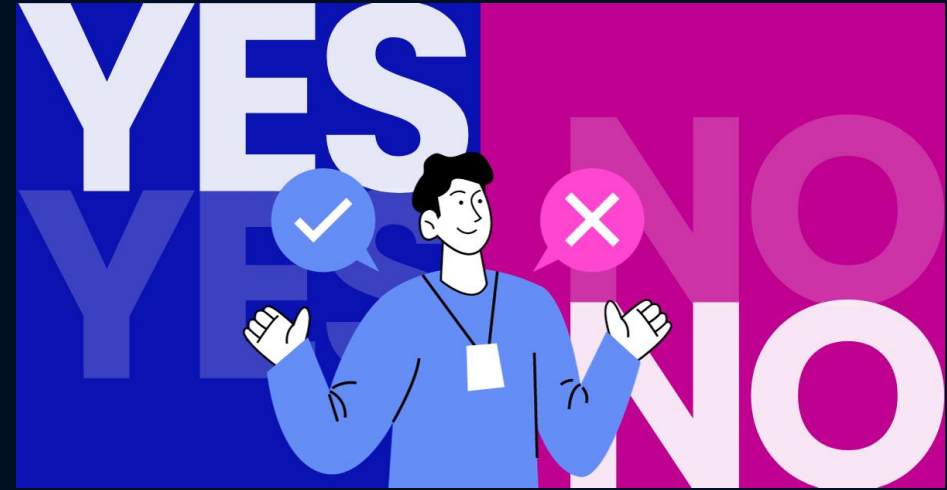
- Do you understand what an SSA is? And, do you have more questions about an SSA?
- What service does Jasmin want/get that is different from the other residential areas in the RM?
- With an SSA, any projects, improvements, maintenance would be at the cost of the residents of that area and not necessarily subsidized by the RM. Do you agree or disagree with this?

We want to hear from you



- Does Jasmin have different needs than the rest of the RM?
If so, what are those needs?
- Any improvements like a park that are made on municipal reserve land are able to be used by any person even if they do not reside in Jasmin.
- Did you know being an SSA does not prevent annexation from a neighbouring municipality?

As a resident of the RM are you for or against Jasmin on Echo becoming an SSA?



Questions and Discussion

Let us know your thoughts...

The RM will accept written submission for their consideration on an ongoing basis.

office@rm187.com

